

Nancy Staub Laughlin

# Pastels / Photographs: Assemblages

*"Laughlin is drawn to an external world of form, color and texture that beckons to her highly individual and discerning eye. She thus creates for us a fresh and enchanting world of form and chroma that seem to lurk just beyond the normal eye's ability to grasp the actual scene and its implications fully."*

- late Sam Hunter, Art Critic and Historian of Modern  
and Contemporary Art



*The Elegance of the Storm*  
32 x 45

Pastel on paper, mounted photographs



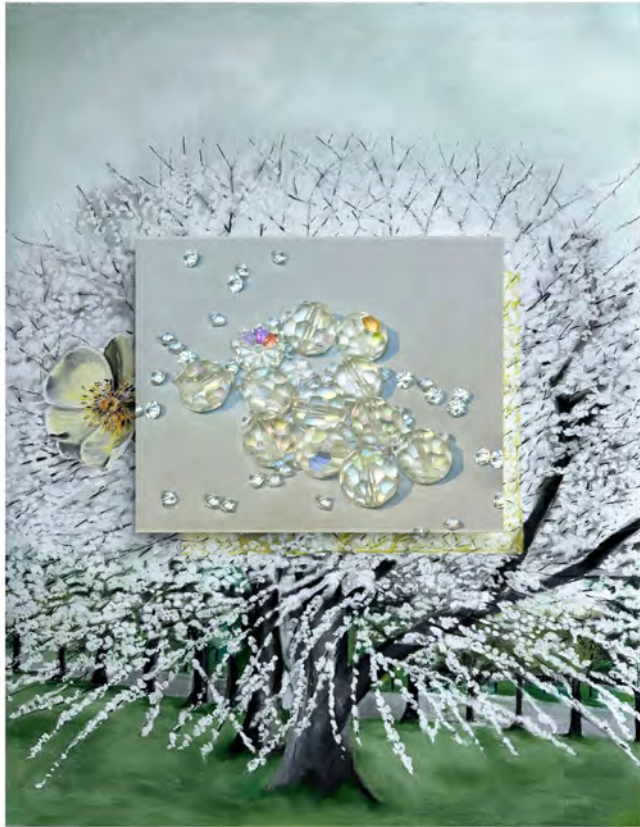


*The Phenomenon of the Spring Flurry*

30 x 43

Pastel on paper, mounted photograph





*The Dazzling of Spring*

41 x 61

Pastel on paper, mounted photograph





*The Blossoming Flurry*

30 x 43

Pastel on paper, mounted photograph





*The Luminosity of the Blizzard*  
25 x 32, pastel on paper, mounted  
photograph





*The Flowering of the Flurry*  
 Panel 1+3, 43 x 27, Panel 2, 43 x 43  
 Pastel on paper, mounted photograph



*Crystallization of the Wave*

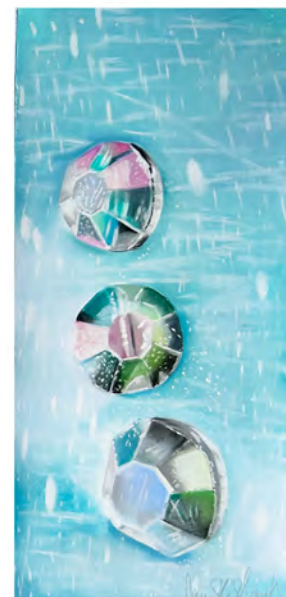
Panel 1 & 3, 30 x 48, Panel 2, 50 x 48  
pastel on paper, mounted photographs





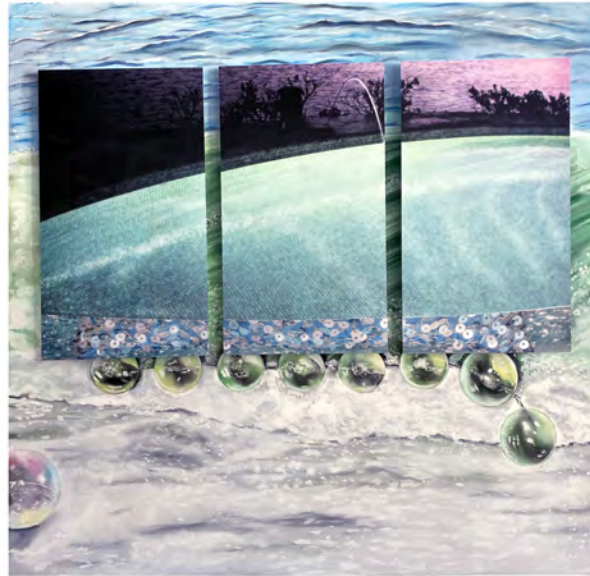
*Exhilaration of Sparkle*  
each panel 20 x 19,pastel on paper  
mounted photographs





*Perfection of Rain*

20 x 44 pastel on paper, mounted photograph



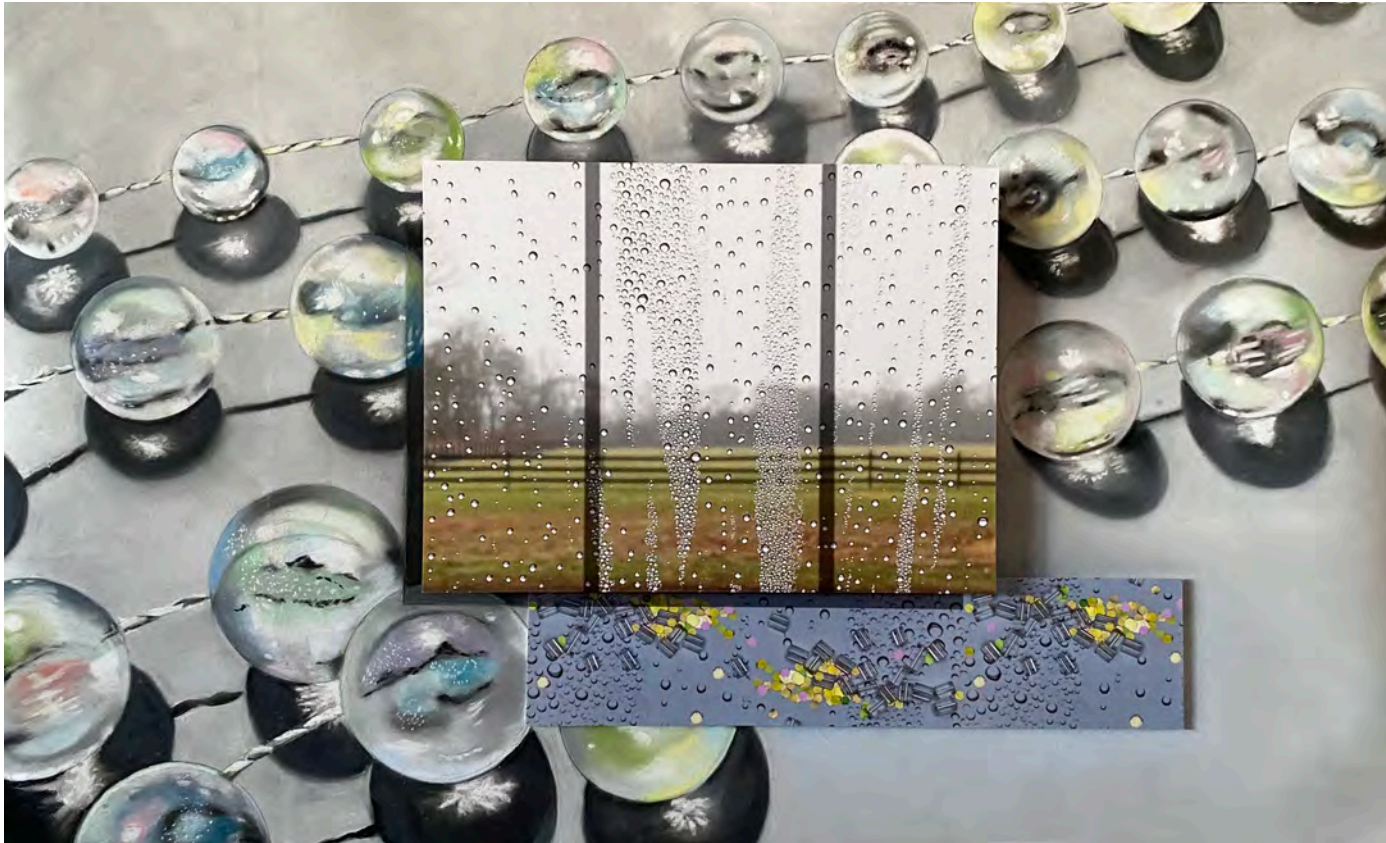
*Effervescence of the Sparkling Wave*  
 panel 1 & 3, 35 x 25, panel 2, 35 x 36  
 pastel on paper, mounted  
 photographs



*Showering Sparkle*

panel 1 & 3, 25 x 17, panel 2, 25 x 26  
pastel on paper, mounted photographs





*Sparkling Drops of Rain*

24 x 39

pastel on paper, mounted photograph



*The Wave of Sparkle*

30 x 40

pastel on paper, mounted photographs





*The Drizzling Glow of the Ocean*  
25 x 32  
pastel on paper, mounted photographs





*The Color of Precipitation*

29 x 39

pastel on paper, mounted photograph



*Golden Sprinkle*

27 x 32

pastel on paper, mounted photographs





*In the Midst of the Flurry*

34 x 45

pastel on paper, mounted photographs





*Flowering, Froth and Flurries*

28 x 36

pastel on paper, mounted photograph



*The Color of Snow*

38 x 41

pastel on paper, mounted photographs





*Shimmering Fall*

34 x45

pastel on paper, mounted photographs

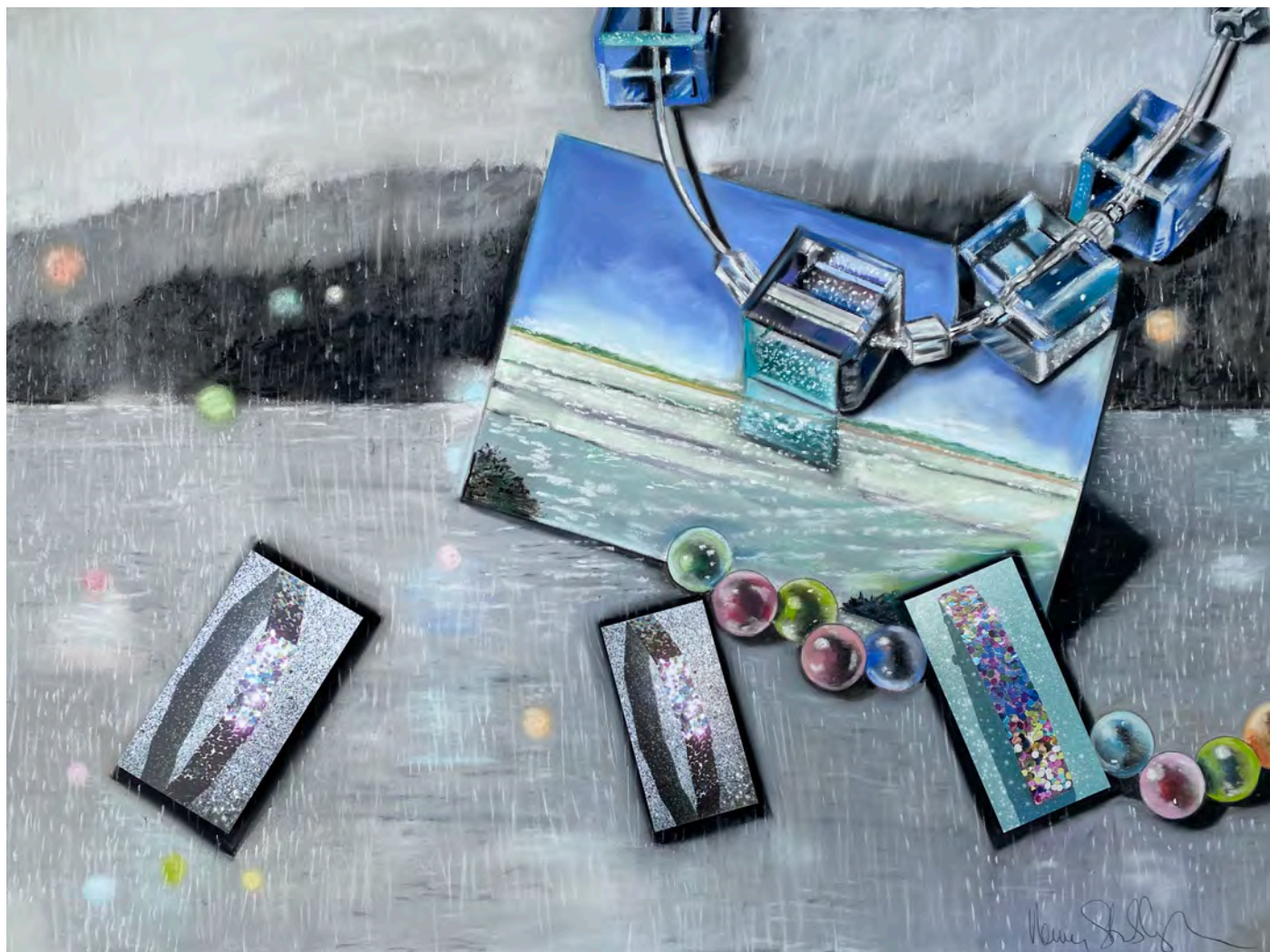




*Sparkle, Mist and Elegance*

38 x 48

pastel on paper, mounted photographs



*Sparkling Water and Rain*  
24 x 30  
pastel on paper, mounted photographs





*Springing Glow*

25 x 31

pastel on paper, mounted photograph



*Sprinkling of Glow and Flurries*  
25 x 32  
pastel on paper, mounted photographs





*Sprinkle of Spring Sparkle*

30 x 42

pastel on paper, mounted photographs



*Twinkle, Twinkle, Shimmer, Glow*

26 x 38

pastel on paper, mounted photograph





*Twinkle, Flurry, Glow*

28 x 38

pastel on paper, mounted photograph



*Glowing Light Amongst the Pink*  
27 x 38  
pastel on paper, mounted photographs





*The Path of Fall Sparkle*

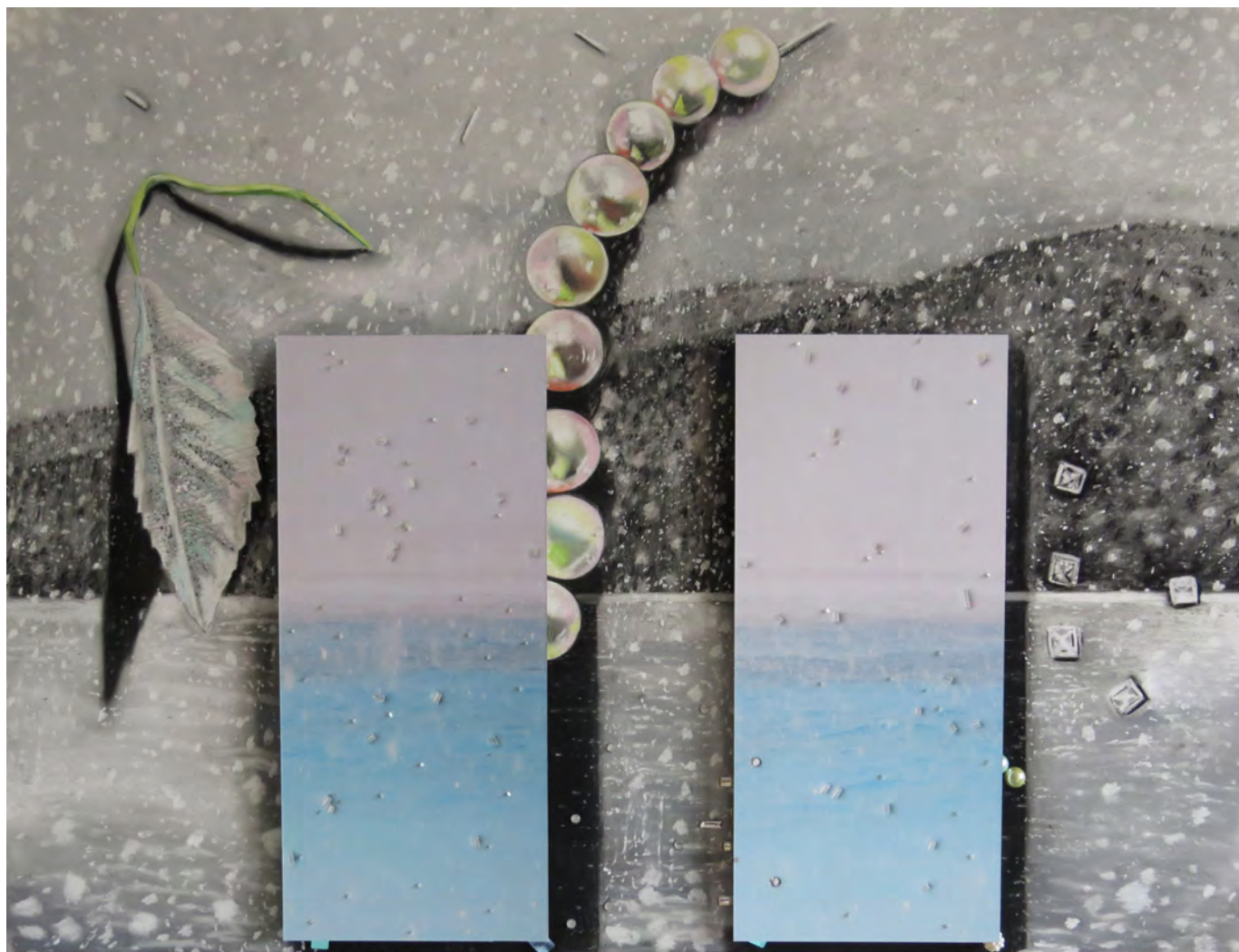
33 x 50

pastel on paper, mounted photographs



*The Sparkling Waves and Blossoms*  
28 x 35  
pastel on paper, mounted photographs





*Flurrying of Sparkle*

28 x 34

pastel on paper, mounted photographs



*The Equation of Sparkle*

36 x 48

pastel on paper, mounted photographs





*Field of Flurrying Sparkle*

33 x 50

pastel on paper, mounted photographs



*Epitome of Glimmer*

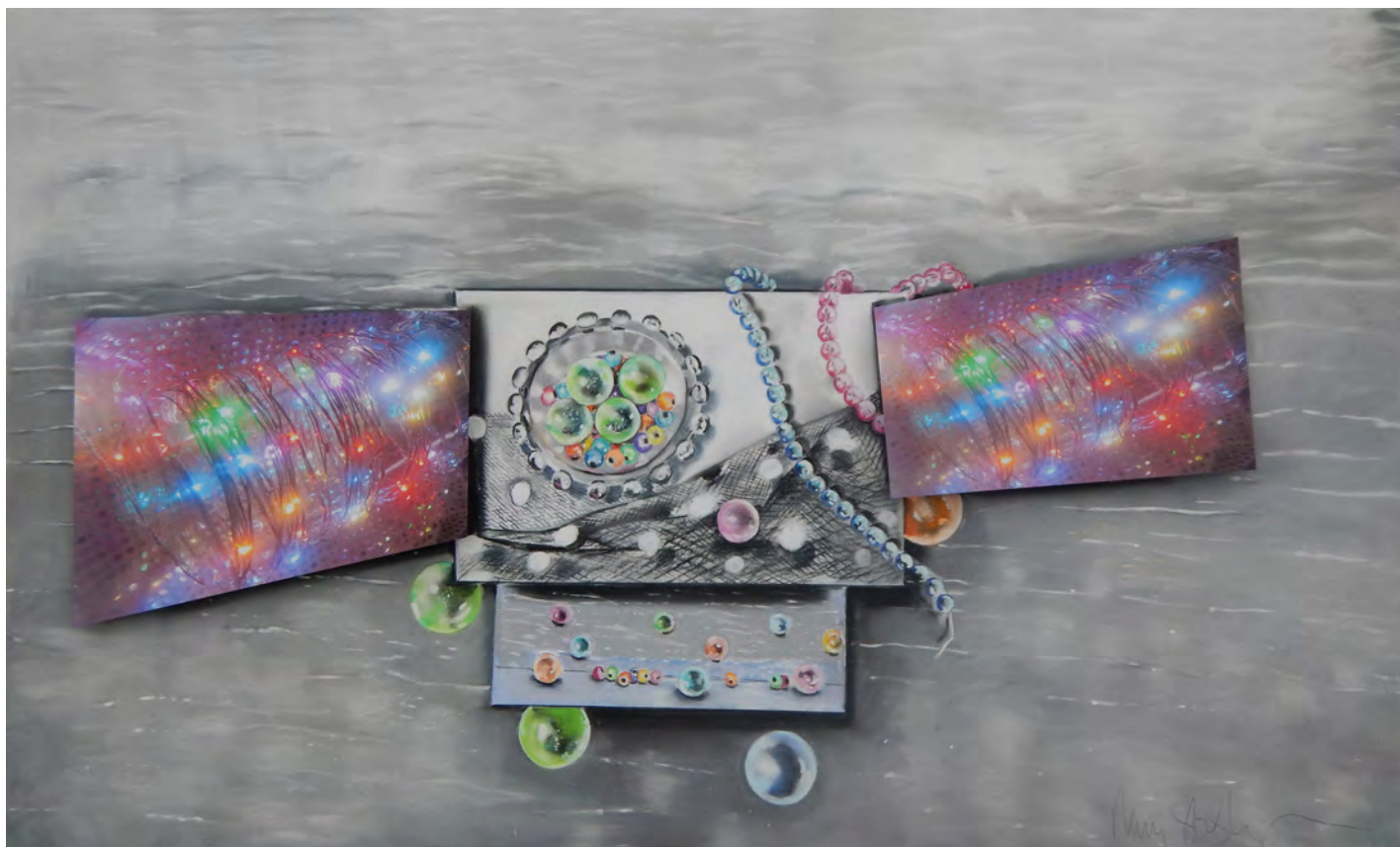
32 x42

pastel on paper, mounted photographs





*The Light and Sparkle of Winter*  
37 x 50  
pastel on paper, mounted photographs



*The Mist and the Glowing Lights*  
27 x 43  
pastel on paper, mounted photographs

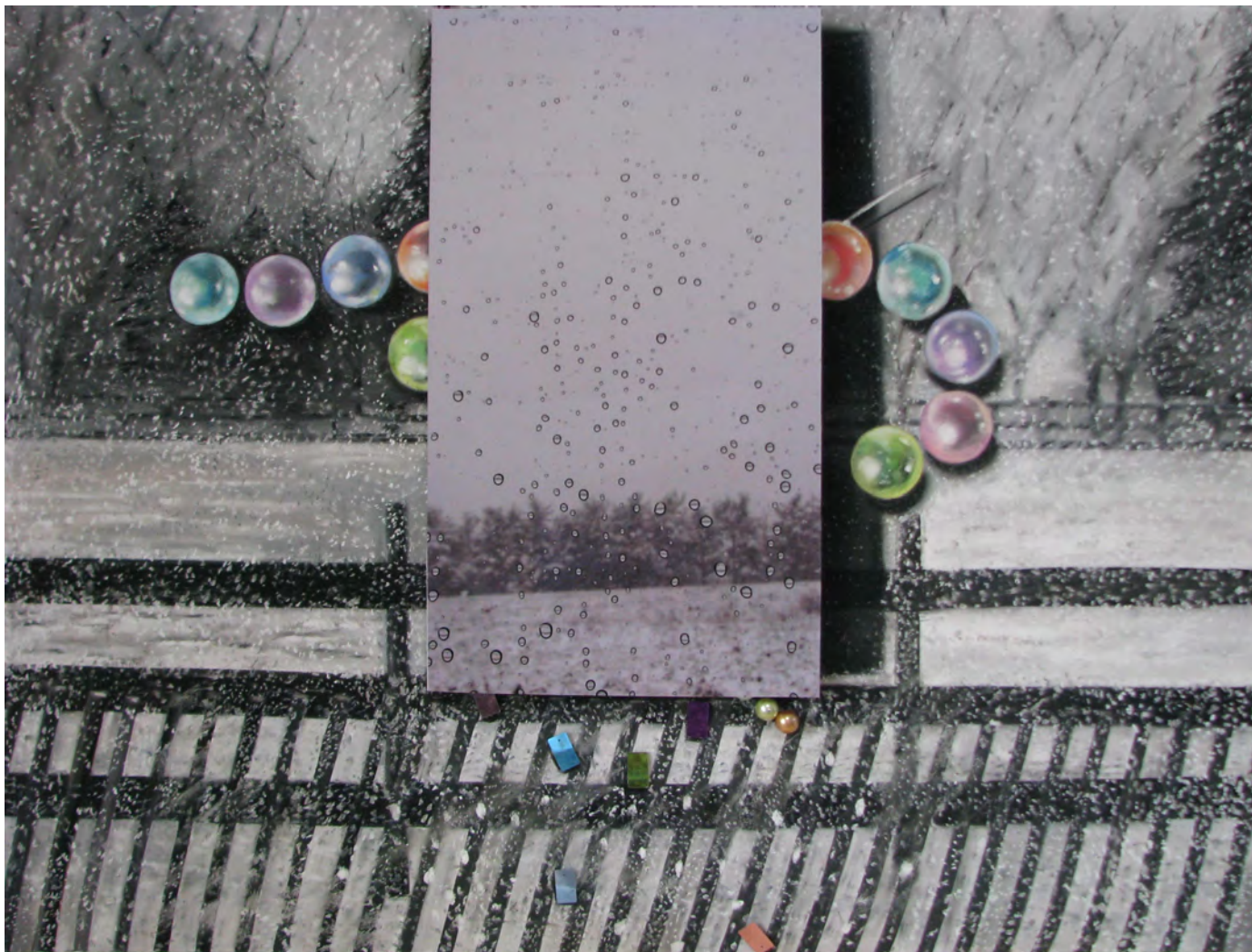




## Take Me to the Glitter

35 x 50

pastel on paper, mounted photographs



*Drops, Flurries and Paillettes*

24 x 30

pastel on paper, mounted photograph





*In the Mist*

29 x38

pastel on paper, mounted photographs

My assemblages: pastel on paper and mounted photographs, are created by layering juxtaposing elements: nature vs. glitter. I immerse the viewer into my glowing, dazzling world of light, color, dimension and beauty from a different perspective. The effects are invigorating and enlightening and allows the viewer to pause and restore.

I create these stills by combining the elements: ie - photographs of the landscape in different seasons and detailed photographs of glowing and glittering moments. The paralleling objects are added to accentuate the phenomenons. These compelling compositions are the culmination of many carefully executed steps that define my unique creative process.



Nancy Staub Laughlin is an accomplished pastel artist and photographer. Nancy has a BFA from Moore College of Art, Philadelphia. She has exhibited at Newhouse Gallery, Noho Gallery and Carter Burden Gallery in New York City. She has been recognized and honored in New Jersey where she had an one-person exhibit at the New Jersey State Museum along with being included in the permanent collection. Nancy was also honored by Secretary of State, Nina Mitchell Wells with a solo exhibition at the State House of New Jersey.

Other prestigious accomplishments have been exhibits at the Noyes Museum, Prudential Corporate Gallery, Bristol/Myers Squibb and Johnson and Johnson Headquarters, all in New Jersey. Her work was also honorably included in a select exhibit, Six New Jersey Masters at Kean University, Burger Gallery where she later had a one person exhibit at Nancy Dryfoos Gallery at Kean.

Nancy has received critical acclaim and reviews: New York Times, City Arts, Gallery/Studio Magazine , Martha Stewart Magazine and featured artist reviews and features by Renee Phillips, Manhattan Arts, The Trenton Times, Star Ledger and Village Voice, Top New York City Picks. Nancy is represented in many private, corporate and health care collections. She was chosen to be included in the National Association of Women in the Arts collection at the Jane Voorhees Zimmerli Museum at Rutgers University and to receive the Miriam Schorr Memorial Award: Works on Paper, National Association of Women in the Arts.

Her most recent exhibitions have been with Carter Burden Gallery, New York City and The View, Adirondack Region, New York.

Her most memorable highlight was being reviewed by the late Sam Hunter, Art Critic and Historian of Modern and Contemporary Art who found her work "refreshingly unique." This has been a common theme among many of her positive reviews. She offers a "different" approach and passion to drawing. Nancy is consistent in her vision....one can always recognize her signature style no matter how much she has changed or grown.

[www.nancystaublaughlin.com](http://www.nancystaublaughlin.com)